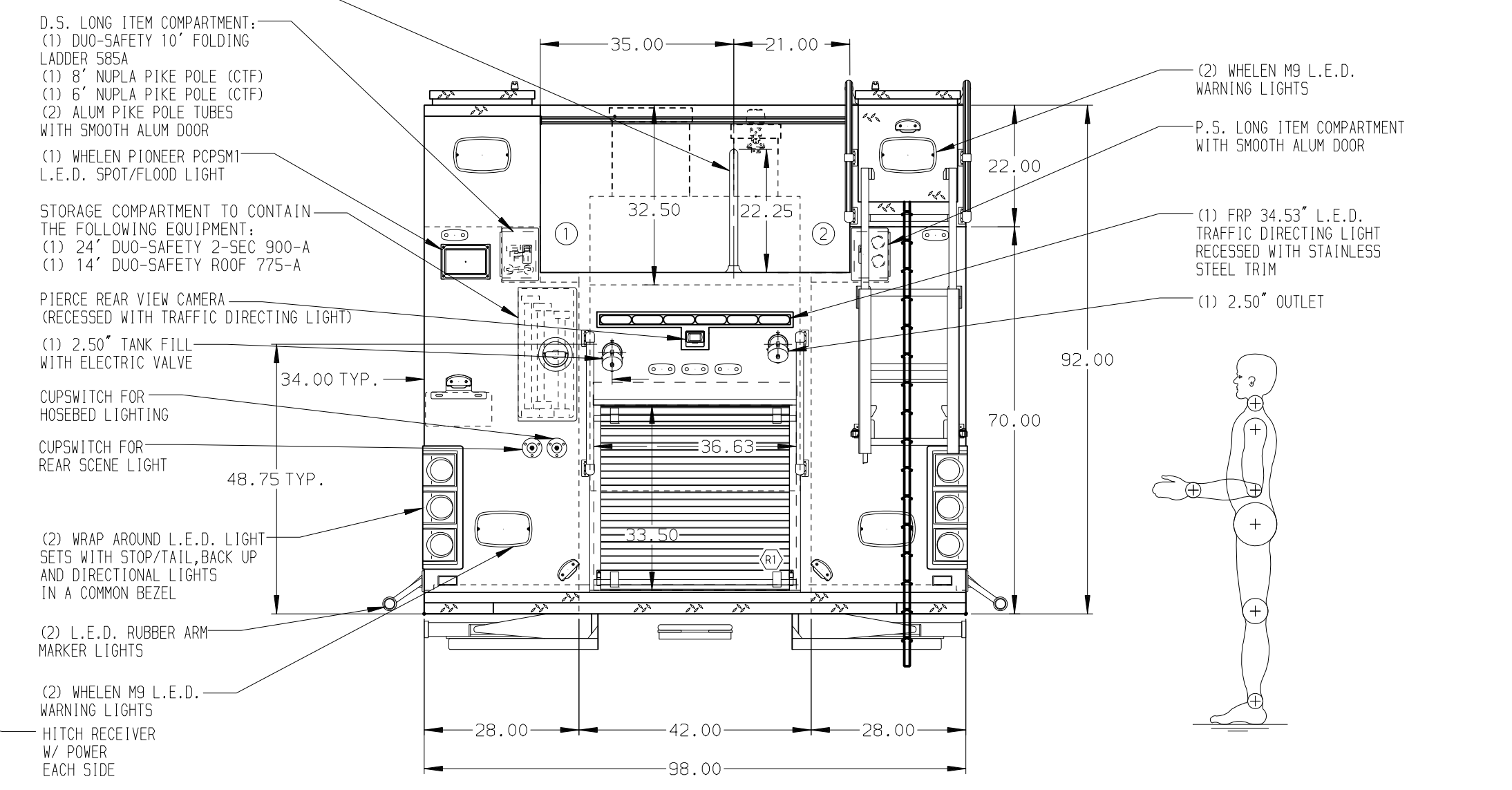
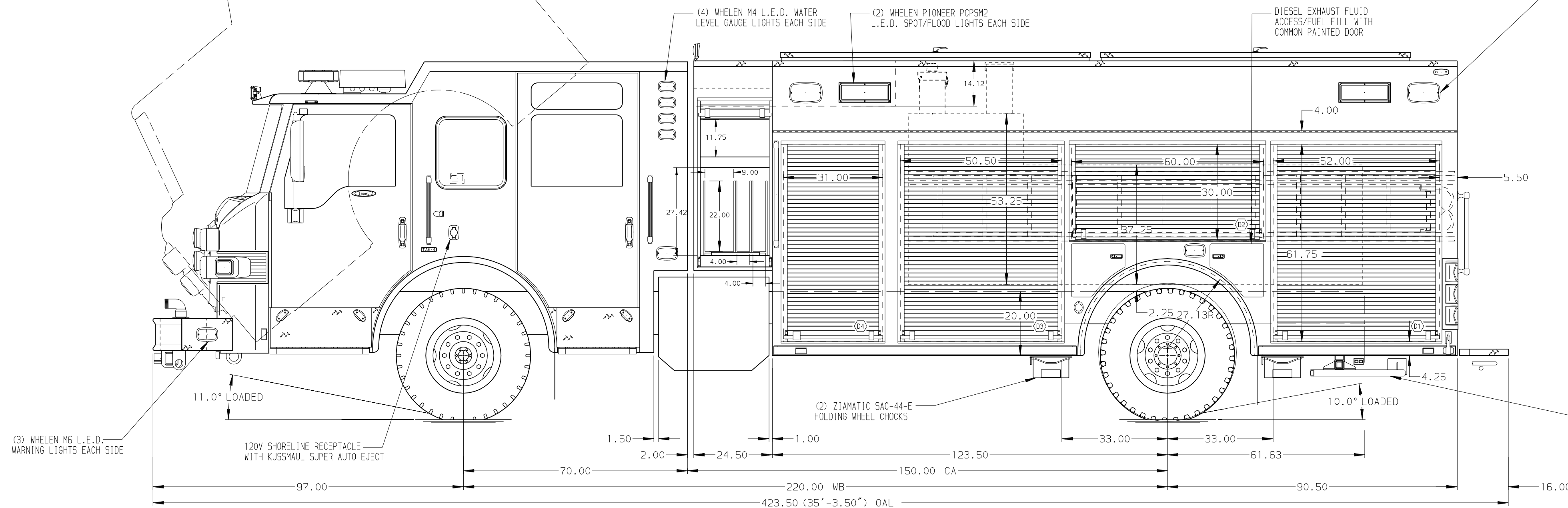


HOSEBED CAPACITIES
 ① 1200' OF 5.00" SUPPLY HOSE
 ② 600' OF 3.00" D.J. POLY HOSE



ALUMINUM BODY SIDE ROLL AND FRONTAL IMPACT PROTECTION

NOTE
 DIMENSIONS SHOWN ARE APPROXIMATE AND ARE SUBJECT TO MINOR DEVIATIONS AS MAY OCCUR OR BE NECESSARY IN CONSTRUCTION.
 MINOR DETAILS NOT SHOWN.

- AIR INLET WITH DISCONNECT COUPLING ON D.S. PUMP PANEL
- BATTERY CHARGER LOCATED BEHIND DRIVER'S SEAT
- BATTERY CHARGER INDICATOR BEHIND DRIVER'S SEAT DISPLAYED THROUGH WINDOW
- DUAL L.E.D. LIGHT STRIPS LOCATED IN HOSE BED
- PULL STRAP ON DOOR FOR EACH CROSSLAY AREA ROLL UP DOOR
- ADJUSTABLE FULL WIDTH DEPTH SHELVES TWO IN D1 AND D3
- ADJUSTABLE SLIDE-OUT TRAYS TWO IN P1 AND P3 AND ONE IN P4
- CABLE RELEASE LATCH WITH SINGLE HAND OPERATION FOR P1, P2, P3, AND P4
- ONE FLOOR MOUNTED SLIDE-OUT TRAY IN R1, P1, P3, AND P4
- ONE SWING-OUT TOOL GRID SYSTEM IN D2
- ONE ADJUSTABLE TILT/SLIDE-OUT TRAY IN P1, P2, P3, AND P4
- POLY TOOL BOXES THREE IN P3 AND SIX IN P4
- ONE VERTICAL DIVIDER IN P1
- OIL DRY HOPPER WITH 150 LBS. OF OIL DRY ABSORBENT IN HATCH COMPARTMENT ABOVE P4
- PAC TRAC ON THE REAR WALL OF D3
- ONE ADJUSTABLE 2.00" HIGH SHELF IN D3
- TRANSVERSE PARTITION IN COMPARTMENT-D1/R1 AND P1/R1
- TWO SLIDE-OUT ALUMINUM TOOLBOARDS IN P1
- TWO PVC STORAGE TUBES IN P.S. LONG TOOL STORAGE COMPARTMENT
- STORAGE RACK FOR 6 AIR BOTTLES IN D1
- (3) ADDITIONAL POLY TRAYS SHIPPED LOOSE
- CIRCUIT BREAKER PANEL IN D3
- ONE HANNAY ELECTRIC REWIND CORD REEL MODEL 1618-17-18 WITH 200' OF 10/3 CABLE IN HATCH ABOVE P3
- (1) 120V DUPLEX RECEPTACLE IN P4
- ONE 120V POWER OUTLET STRIP IN P4
- BULKHEAD FITTING FOR HELMATIC CORE TECH W/ COVER ON THE PASSENGER'S SIDE AND DRIVER'S SIDE BUMPER
- DISPOT AUTOMATIC TIRE CHAINS TO BE PROVIDED AT REAR
- HUSKY 12 FOAM SYSTEM
- FOUR DRAWER TECH DRAWER ASSEMBLY IN D3
- ADJUSTABLE SLIDE-OUT WORK SURFACE IN D3

REV	DATE	BY	CH	IMPEL
03AUG17	LST	JGO		PIERCE
08JUN17	LST	WKL		MODEL

		JOB NO.	31220
		SCALE	DATE
TITLE	1500-D-810P 750 GAL OF WATER W/(2) 30 GAL FOAM CELLS 214" PUC RESCUE, (3) X-LAYS, LADDERS THRU BODY	DRAWN BY	LST
FOR	CITY OF SMITHVILLE SMITHVILLE, TENNESSEE	CHECKED BY	KBO
DWG NO.	31220AD	SHEET SIZE	SHEET NO.
		D	1 OF 1