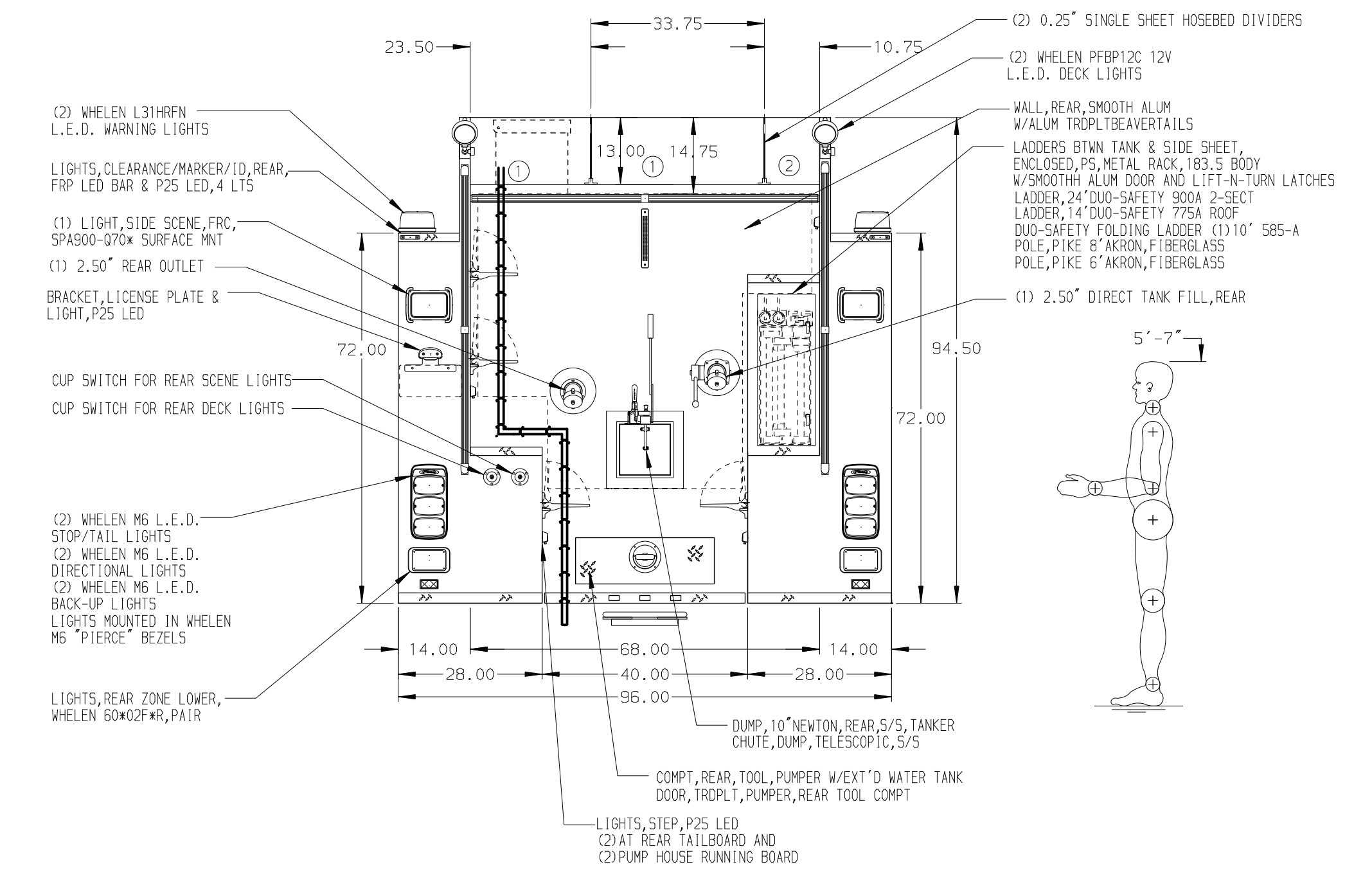
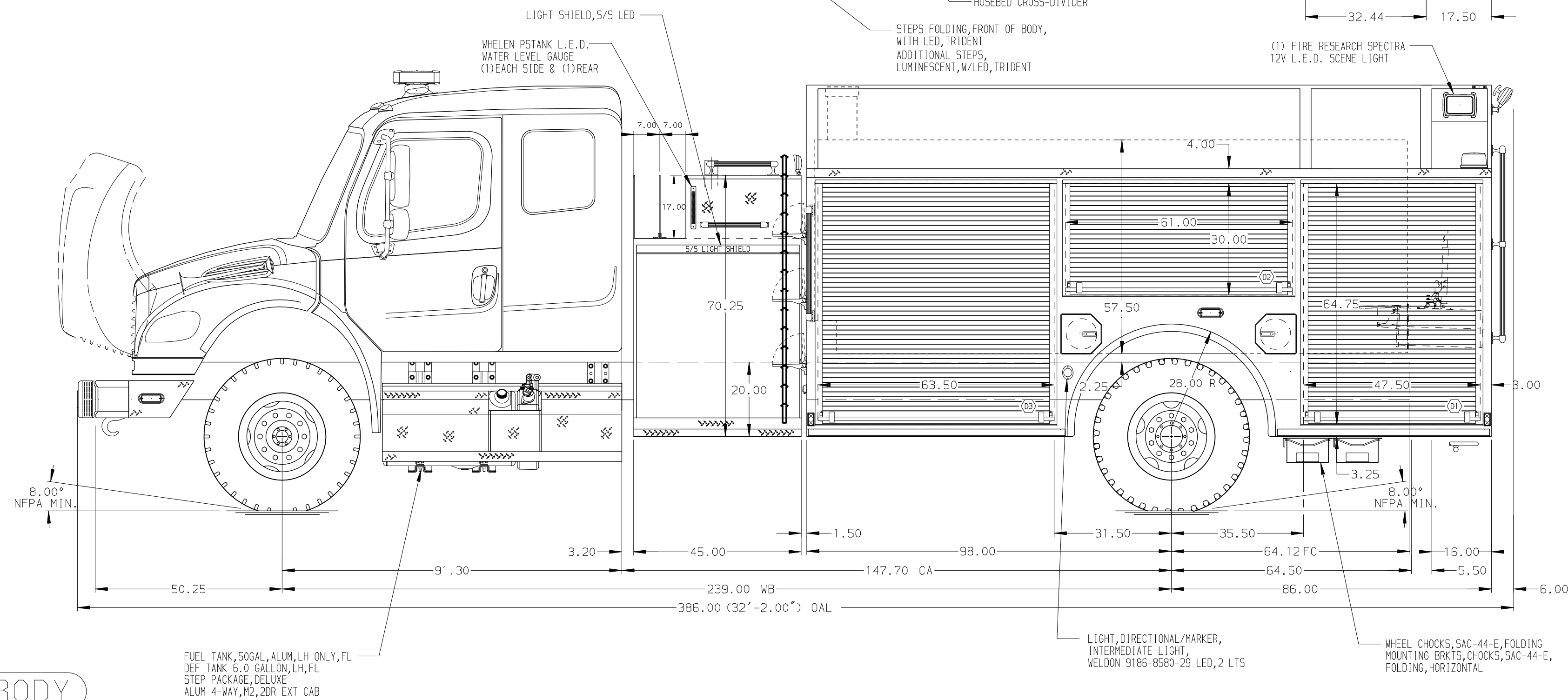


**HOSEBED CAPACITIES**  
 (1) 1500' OF 2.50" D.J. POLYESTER HOSE  
 (2) 400' OF 1.50" D.J. POLYESTER HOSE



**ALUMINUM BODY**

FUEL TANK, 50 GAL, ALUM, LH ONLY, FL DEF TANK 6.0 GALLON, LH, FL STEP PACKAGE, DELUXE ALUM 4-WAY, M2, 2DR EXT CAB

**NOTE**  
 DIMENSIONS SHOWN ARE APPROXIMATE AND ARE SUBJECT TO MINOR DEVIATIONS AS MAY OCCUR OR BE NECESSARY IN CONSTRUCTION. MINOR DETAILS NOT SHOWN.

REV.	DATE	BY	CHK'D	CHASSIS DATA	CHASSIS FL	MODEL M2-106
23MAY16	JAF	NAS				

**Pierce** MANUFACTURING INC.  
 BRADENTON, FLORIDA

TITLE	1500-D-1800 POLY, 183.5" BODY, DS & PS FULL HEIGHT 45" SIDE CONTROL, (2) CROSSLAYS	JOB NO.	30124
FOR	PARIS TN FIRE DEPARTMENT PARIS, TENNESSEE	DATE	SCALE 1:24
DRWG. NO.	30124AD	11MAY16	DRAWN BY JAF
		12MAY16	CHK'D BY RWI
		SHEET NO. 1 OF 1	SHEET SIZE D