

**PUMPER BODY**

Medium Aluminum 2nd Gen Pumper

**CHASSIS**

Enforcer Chassis

**CHASSIS AXLE, FRONT, CUSTOM**

19,500 lb TAK-4 Axle

**AXLE, REAR**

24,000 lb Dana Axle

**ENGINE**

450 HP Cummins L9 Engine

**TRANSMISSION**

Allison 5th Gen, 3000 EVS P

**BUMPER**

19" Extended Painted Steel

**CAB**

7010 Enforcer Cab

**BODY WATER TANK**

7500 Gallon New York Style Water Tank

**COMPT, PUMPER, REAR**

37.75" FF RollUp Rear Compt

**COMPT, PUMPER, DRIVER SIDE**

152" RollUp Full Height Front & Rear FDLR

**COMPT, PUMPER PASS. SIDE**

152" RollUp Low FDLR

**FIRE SUPPRESSION PUMPHOUSE**

45" Control Zone Top Mount

**PUMP**

1500 GPM Waterous CSU

**CROSSLAYS, 1.50"**

(2) 1.50" Standard Capacity

**CROSSLAYS, 2.50"**

2.50" Crosslay Not Required

**SPEEDLAYS**

Speedlays Not Required

**GENERATOR**

Generator Not Required

**Foam System**

Foam System Not Required

**Foam Cell**

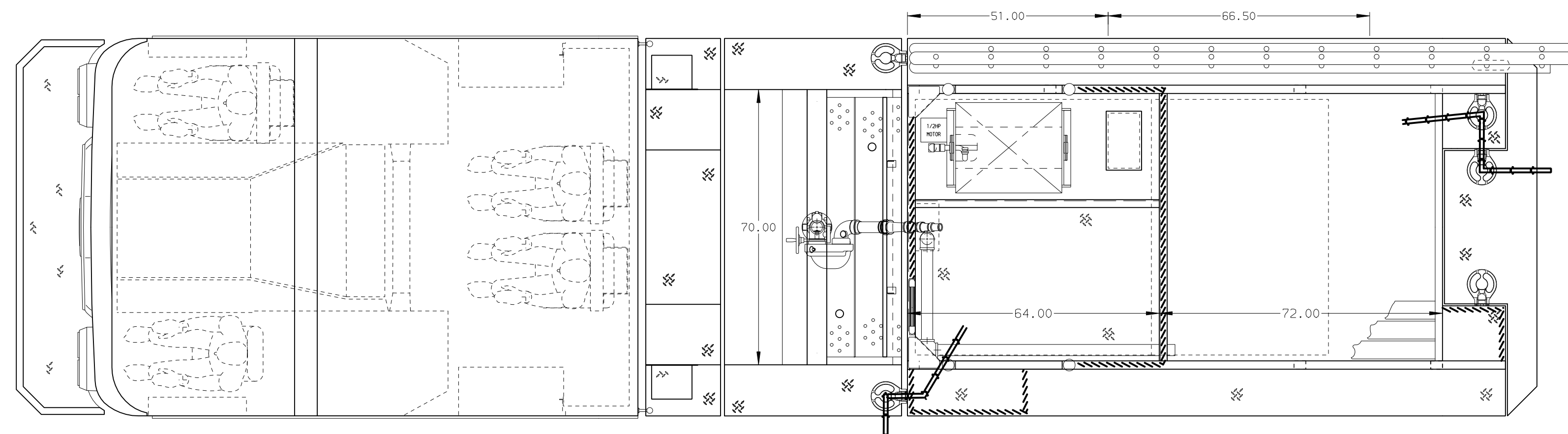
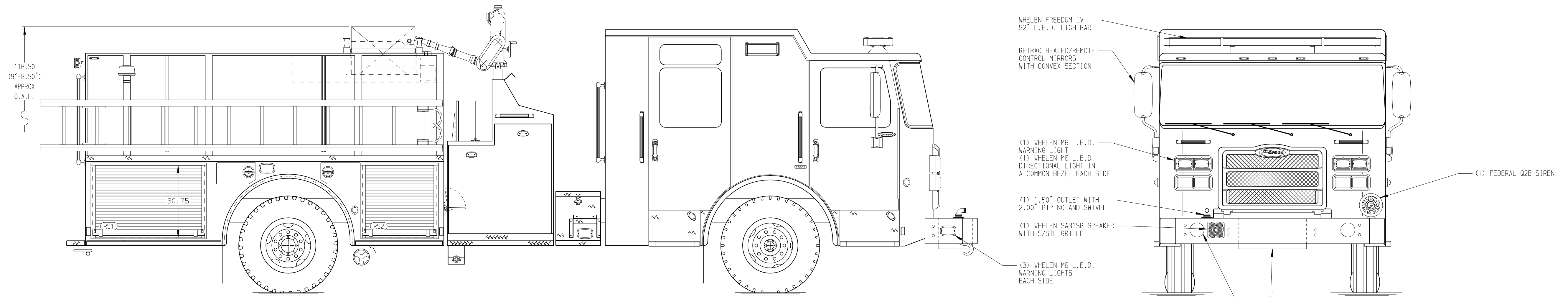
Foam Cell Not Required

Side Roll and Frontal Impact Protection

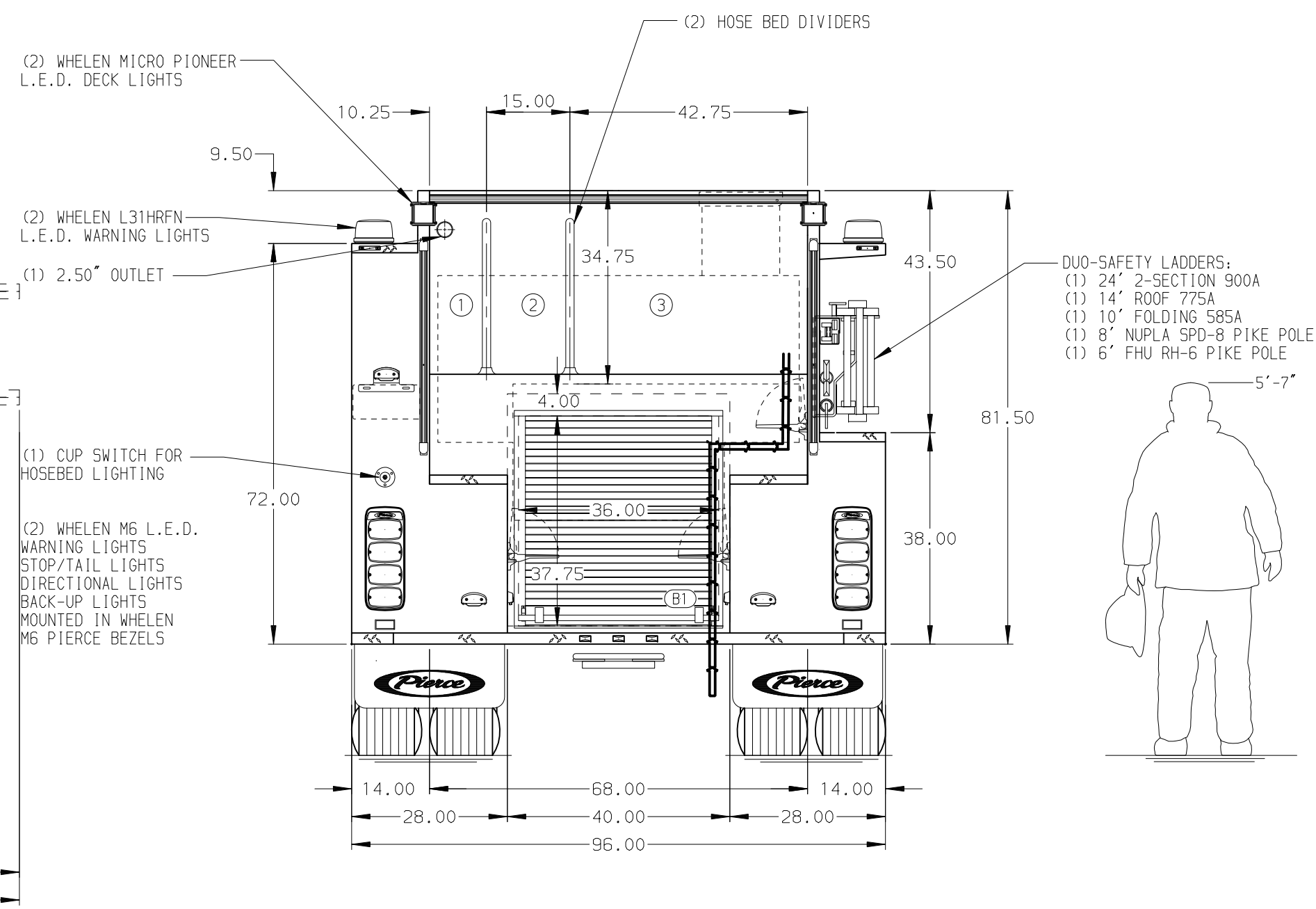
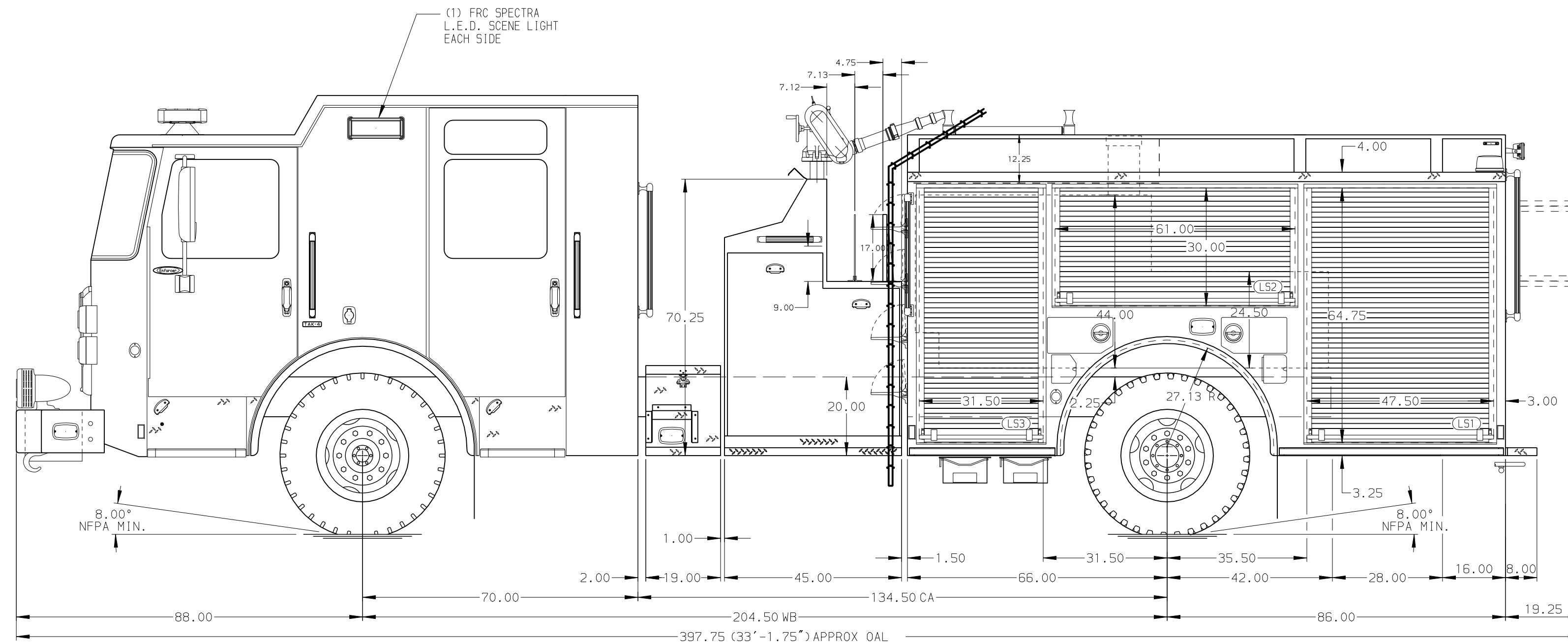
**NOTE**  
DIMENSIONS SHOWN ARE APPROXIMATE AND ARE SUBJECT TO MINOR DEVIATIONS AS MAY OCCUR OR BE NECESSARY IN CONSTRUCTION. MINOR DETAILS NOT SHOWN.

1. SHORELINE RECEPTACLE WITH KUSSMAUL SUPER AUTO-EJECT LOCATED ON DRIVER SIDE OF THE CAB
2. AIR INLET WITH DISCONNECT COUPLING IN THE DRIVER SIDE STEPWELL
3. BATTERY CHARGER LOCATED IN COMPARTMENT PER SHOP ORDER
4. BATTERY CHARGE INDICATOR LOCATED ON THE DRIVER SIDE SEAT RISER
5. FOUR ADJUSTABLE SHELVES LOCATED PER SHOP ORDER
6. ONE FLOOR MOUNTED SLIDE-OUT TRAY IN COMPARTMENT PER SHOP ORDER
7. ONE SWING-OUT TOOLBOARD LOCATED PER SHOP ORDER
8. ALUMINUM PEGBOARD LOCATED PER SHOP ORDER
9. HANNAY BOOSTER REEL MODEL SBEP34-23-24 WITH CAPACITY FOR 200' OF 1.00" BOOSTER HOSE LOCATED ABOVE WATER TANK

10. PARTITION BETWEEN COMPARTMENTS L51/B1 AND R51/B1



HOSEBED CAPACITY	
BED 1	200' OF 2.50" HOSE
BED 2	500' OF 2.50" HOSE
BED 3	1000' OF 5.00" HOSE



		JOB NO.	32946
		SCALE	DATE
		1:24	
TITLE		PIERCE	DRAWN BY
Pierce Pumper Approval Drawing		COL	30JUL18
FOR		COL	CHECKED BY
North Little Rock		KBO	02AUG18
DWG NO.		32946AD	SHEET NO.
			1 OF 1

REV	DATE	BY	CH	ENFORCER
28AUG18	COL	-		